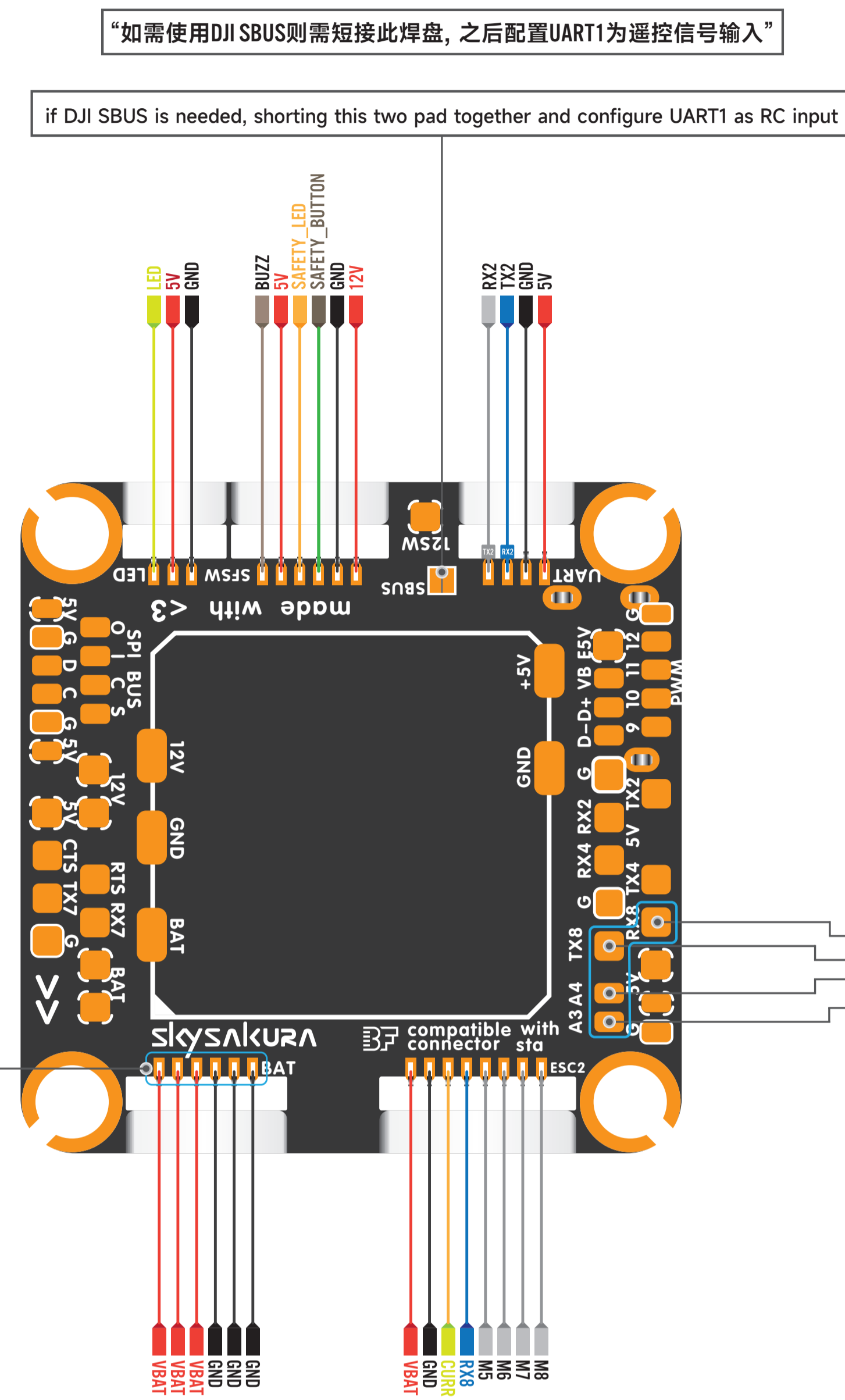


“Betaflight需在通道设置页面设置USER1来控制图传供电的开关，如不需要开关功能则设置通道范围为1000-2000即可，不设置则默认为关闭。  
ArduPilot请设置对应遥控通道功能为relay1 on/off，不设置则默认为打开”

Betaflight needs USER1 function configured to control the output of VTX switch, if ON/OFF function not needed, configure channel range to 1000-2000, if not configured, the 12V is NOT outputted to SH1.0 plug.  
Ardupilot needs to set RCx\_function to relay1 on/off, if not configured, the power is default ON.

“如BEC总输出功率超过(6s 22w, 12s 44w), 为使用中的安全, 建议连接此插座至电池输入”

if required output power reaches 22w with 6s battery or 44w with 12s battery, it is recommended to connect this port to battery input (ESC) for reliability.



“如需使用DJI SBUS则需短接此焊盘, 之后配置UART1为遥控信号输入”

if DJI SBUS is needed, shorting this two pad together and configure UART1 as RC input

“外置ADC输入(ADC3与ESC2共享, 如已使用ESC2插座则ADC3不可用, 强行外接设备可导致烧毁”, 以及”RX8已对应ESC1/2的电调回传功能, 如不使用电调回传则不要接线, 此焊盘即可用”

external ADC input A3/A4, A3 is shared with ESC2 connector, if ESC2 connector is used then A3 pad is not usable, connecting device onto it may cause damage to the MCU. RX8 is configured as ESC1/2 telemetry, if no telemetry needed then do not connect wire to the connector and then the pad is usable.

INPUT VOLTAGE	4-12s	
5VBEC	5A MAX	60W MAX
12VBEC	5A MAX	
IMU1	ICM42688	ArduPilot Only
IMU2	IIM42652	
BAR01	DPS310	ArduPilot Only
BAR02	ICP20100	
MAG1	IST8310	
UART	7	
SPI	1	
ADC	4	
Safety Switch	Supported	ArduPilot Only
CAN BUS	Supported	ArduPilot Only
PWM	12	
I2C	1	